

Harnessing Systems Biology Approaches to Engineer Functional Microvascular Networks

Lauren S. Sefcik, Ph.D.,¹ Jennifer L. Wilson,² Jason A. Papin, Ph.D.,^{2,3} and Edward A. Botchwey, Ph.D.^{2,4,5}

Microvascular remodeling is a complex process that includes many cell types and molecular signals. Despite a continued growth in the understanding of signaling pathways involved in the formation and maturation of new blood vessels, approximately half of all compounds entering clinical trials will fail, resulting in the loss of much time, money, and resources. Most pro-angiogenic clinical trials to date have focused on increasing neovascularization via the delivery of a single growth factor or gene. Alternatively, a focus on the concerted regulation of whole networks of genes may lead to greater insight into the underlying physiology since the coordinated response is greater than the sum of its parts. Systems biology offers a comprehensive network view of the processes of angiogenesis and arteriogenesis that might enable the prediction of drug targets and whether or not activation of the targets elicits the desired outcome. Systems biology integrates complex biological data from a variety of experimental sources (-omics) and analyzes how the interactions of the system components can give rise to the function and behavior of that system. This review focuses on how systems biology approaches have been applied to microvascular growth and remodeling, and how network analysis tools can be utilized to aid novel pro-angiogenic drug discovery.

Introduction

THE FIELD OF TISSUE ENGINEERING seeks to replace damaged, injured, or missing tissues with biologically compatible substitutes to maintain, restore, and improve tissue and organ function. However, the most important factor for the survival of tissue-engineered biological substitutes is the incorporation of a vascular supply to provide the appropriate delivery of oxygen, nutrients, progenitor, and inflammatory cells, and a mode for waste and metabolite efflux. Many tissue engineers have focused on creating cell-seeded or even prevascularized constructs¹⁻⁴ and sophisticated methods of growth-factor-releasing biodegradable polymeric systems⁵⁻⁷ to improve the integration and vascularization of biological implants. Although great strides have been made with this approach, no prevascularized tissue-engineered constructs are currently being employed clinically.

A major hurdle in this area is the sheer complexity of microvascular growth and our incomplete understanding of the process. Angiogenesis, the process by which new capillaries sprout from preexisting vessels, involves the coordinated response of different cell types and molecular signals across various spatial and temporal scales. Early experimental progress in angiogenesis research highlighted the importance of vascular endothelial growth factor (VEGF) as a key angiogenic stimulus.⁸ As a result of early success, most

pro-angiogenic clinical trials to date have focused on increasing neovascularization via the delivery of a single growth factor or gene (most notably, VEGF). However, the disappointing clinical outcomes of single-factor therapies for promotion of angiogenesis serve to highlight the complexity of cell signaling networks that govern microvascular growth and remodeling. Even so, much attention is presently focused on preclinical studies that identify combinations of promising angiogenic agents, including the fibroblast growth factors (FGFs), platelet-derived growth factors (PDGFs), angiopoietins (Ang-), and the transforming growth factors (TGFs).^{6,9,10} However, as screening libraries of potential drug candidates and drug combinations experimentally is prohibitively time consuming, expensive, and relatively limitless in scope,¹¹ many researchers have begun to turn to computational approaches.¹²

Over the past 20 years or more, numerous mathematical and computational models of angiogenesis have been built to enhance our understanding of the process (for detailed reviews of the subject, see Refs.^{13,14}). In 1998, a group of physiologists, biomedical engineers, and bioinformatics experts initiated the Microcirculation Physiome Project with the goal "to create a World Wide Web accessible database of the microcirculation." The Microcirculation Physiome Project was created to integrate biological and functional data with computational models from the gene to the tissue level.¹⁵

¹Department of Chemical and Biomolecular Engineering, Lafayette College, Easton, Pennsylvania.

²Department of Biomedical Engineering, ³Robert M. Berne Cardiovascular Research Center, ⁴Department of Orthopaedic Surgery, and ⁵Center for Immunity, Inflammation, and Regenerative Medicine, University of Virginia, Charlottesville, Virginia.

Although the vision of the founders has yet to fully materialize, significant progress has been made in the area of microvascular network modeling. Much of this work can be found at one online database, a resource for computational models on the microcirculatory system (www.physiology.arizona.edu/people/secomb/network.html) or via links from the Physiome Project Web page (www.physiome.org/Links/#group).¹⁶

Systems biology can be defined as the integration and analysis of complex biological data from a variety of experimental sources, and how the interactions of the system components give rise to the function and behavior of that system. Scientists have worked from a reductionist perspective, which is by definition hypothesis-driven. In the past decade, however, systems biologists have challenged conventional experimentation and introduced new possibilities in testing scientific hypotheses.¹⁷ These so-called holistic approaches aim to discover new emergent phenomena from combining the reductionist approach with network-level analysis of whole biological systems. In this manner, groups of data (-omics) have emerged, including genomics (gene sequencing), transcriptomics (RNA transcripts), and proteomics (protein expression and modification). Thus, the goal of systems biology is to develop a comprehensive integrated system in which all "omic" data can be incorporated and interpreted in a manner in which the whole is greater than

the sum of the parts.¹⁶ To this end, the use of network analysis tools has emerged to help explain experimental results and elucidate coordinated signaling pathways of entire networks of growth factors and genes that would otherwise not be possible through the examination of single-component regulation alone.

Transcriptomics and proteomics have recently contributed to unraveling the complexity of angiogenesis. During the complex process of neovascularization, the balance of pro- and antiangiogenic growth factors (i.e., statins and thrombospondin) controls the rate and extent of microvascular growth (Fig. 1). Matrix metalloproteinases (MMPs) degrade the extracellular matrix (ECM), allowing for endothelial cells (ECs) to form a sprout tip. ECM-bound factors that are released allow ECs to migrate and proliferate as a function of local growth factor gradients. As sprouts form, they can anastomose to adjacent vessels, retract in the absence of pro-angiogenic stimuli, or split or branch. The fate of several sprouts eventually result in a newly organized capillary network that, with the onset of flow, carries blood, oxygen, nutrients, and cells to surrounding tissues. Although the process of angiogenesis occurs under both physiological (i.e., exercise) and pathological (i.e., cancer) conditions, the signaling networks and governance of the process are tightly regulated. For example, studies using transcriptomics approaches systematically compared the gene expression profiles of ECs isolated

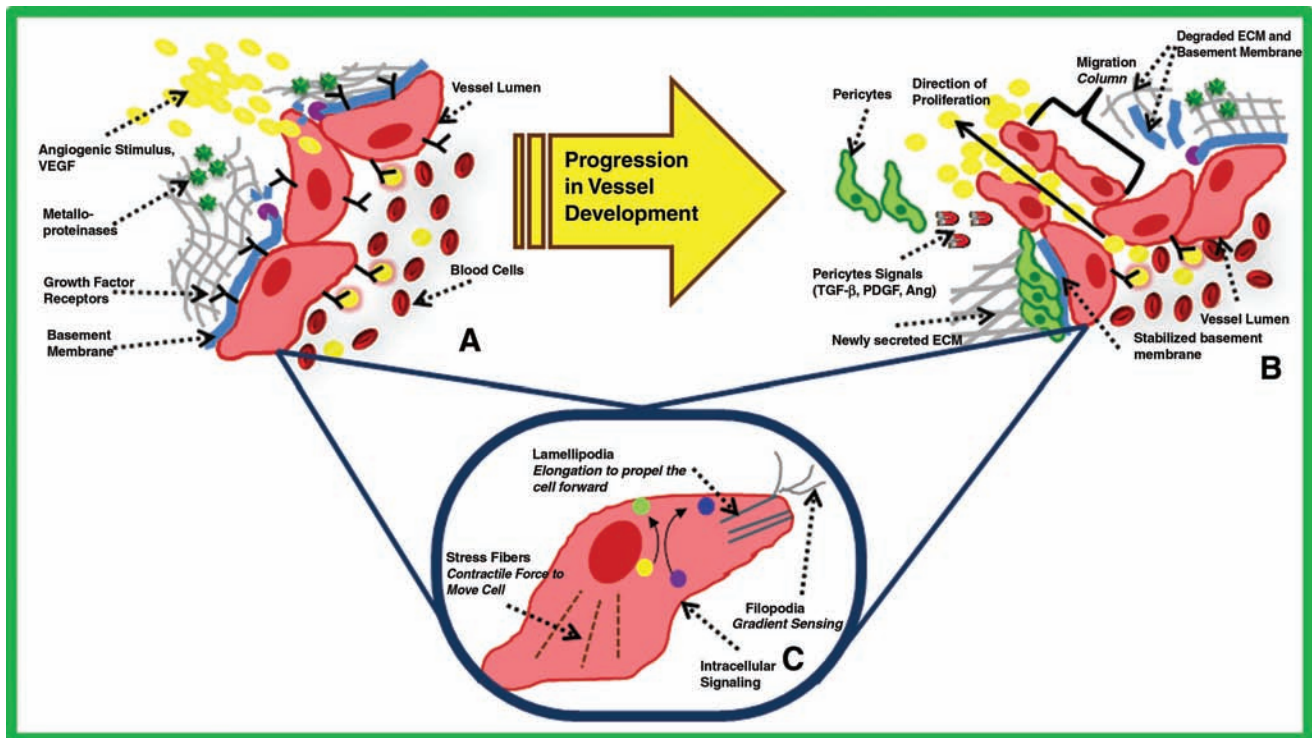


FIG. 1. (A) Sprouting: Released growth factors stimulate the release of enzymes that degrade the basement membrane as well as metalloproteinases that digest the extracellular matrix (ECM). Endothelial cells begin to form a migration column, proliferating toward the angiogenic gradient. Degraded ECM fragments act as haptotactic signals and further encourage cell migration. (B) Maturation: Metalloproteinases continue to degrade the ECM to allow for pericyte migration, and platelet-derived growth factor, transforming growth factor- β , and angiopoietin signaling attract pericytes to new vessels. Once surrounding the vessel, pericytes secrete new matrix, reduce vessel permeability, and induce endothelial quiescence. (C) Intracellular: Intracellular signaling including angiopoietins and growth factors stimulate actin F-actin activity within the cell, allowing it to probe its environment, expand toward a gradient, contract, and ultimately move forward. Color images available online at www.liebertonline.com/ten.

from normal, tumor, and regenerating blood vessels.¹⁸ Not surprisingly, ECs expressed different gene expression profiles depending on their pathological state.

In this review, we will discuss both bottom-up and top-down methods that have been taken to elucidate pro-angiogenic targets. In addition, we will summarize the different types of systems biology approaches that have been employed to clarify our understanding of microvascular remodeling and identify potential therapeutic approaches. We will discuss several -omics approaches and how they have already been exploited to provide new insights to the fields of tissue engineering and vascular biology. Lastly, we will summarize the network analysis tools that can be utilized to elucidate signaling mechanisms of novel pro-angiogenic drug candidates.

Bottom-Up Modeling Approaches

In the bottom-up systems biology approach, information is initially gathered about all the components of a system and

then constructed into a model that is subsequently used to predict systemic properties. For example, molecular signaling pathways may be combined to predict cellular functions, which can then affect tissue patterning or even organ development. Experimental validation of the models and appropriate refinement and iteration are critical. The ultimate goal of bottom-up systems biology is to combine the pathway models into a larger, unified model of the entire biological system of interest, that is, tissue or organ (Fig. 2).

Most angiogenesis models to date have taken the bottom-up approach. These modeling approaches can be classified into four subcategories: continuum models (processes are continuous in time and space), discrete models (system components are individual entities), stochastic models (probability dictates the occurrence of biological events), and deterministic models (system outcomes are determined by previous system inputs).¹³ Although early models captured some of the key processes of angiogenesis (e.g., average capillary sprout density), they are limited because of their constraints in only one spatial dimension.^{19,20} Nearly two

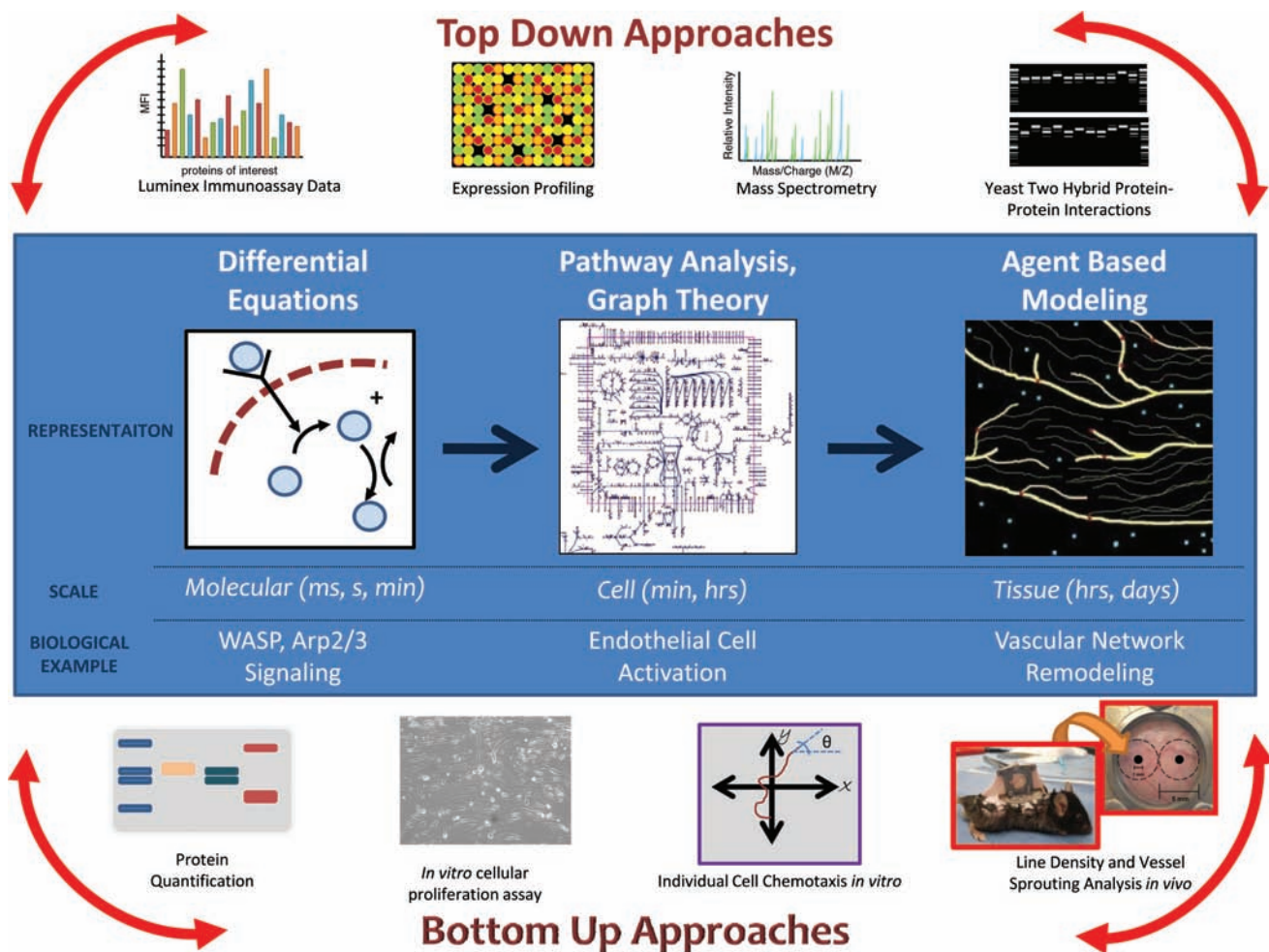


FIG. 2. Systems biology approaches to engineer microvascular networks aid pro-angiogenic drug discovery. Bottom-up approaches focus on collecting and accumulating empirical data about the system and then incorporating these data into a larger, more unified model that explains emergent behaviors and properties. Top-down approaches are data-driven and focus on network level integration to identify novel interactions or mechanisms. Experimental validation of the models and appropriate refinement and iteration are critical. The ultimate goal is to combine top-down and bottom-up approaches to create a unified model of the entire biological system of interest spanning different spatial and temporal scales. Color images available online at www.liebertonline.com/ten.

decades ago, Stokes and Lauffenburger developed a discrete, stochastic mathematical model of EC migration.^{21,22} The model predicted that the rate of vascular sprouting is primarily determined by EC migration rate in the direction of an angiogenic stimulus, namely, acidic FGF, but that a certain degree of randomness in migration direction is required for vessel anastomoses and capillary loop formation. Importantly, their model predictions were validated *in vitro* by measuring the displacement of ECs in the presence or absence of acidic FGF. Although in two space dimensions, the model did not account for interactions between the ECs and the ECM.

To this end, more recent models have combined the model strengths of their predecessors, including ECs, growth factors, and ECM molecules. Sun *et al.* elaborated on prior work by Anderson and Chaplain to create a model that accounts for the heterogeneity and anisotropy of the ECM.^{23,24} The continuous deterministic model included major mechanisms such as cell proliferation, branching, and anastomosis. Perturbations of the model's parameters revealed that capillary branching and extension is independent of starting geometry, that more tortuous networks with less branching occur with a highly anisotropic ECM (which slows down EC migration rate), and that there exists an optimal chemoattractant growth factor concentration that allows for proper branching and extension.²⁴

Cellular automata (CA) simulations, or agent-based models, have been used in the natural and social sciences to predict emergent patterns. This work has extended into the biological sciences to simulate vascular growth and predict blood vessel patterning across different spatial and temporal scales. In agent-based models, each agent behaves according to a given set of rules and can interact with and modify its surroundings. A decade ago, Markus *et al.* developed a CA model of vessel morphogenesis that describes leaf vein patterning based on rules for branching, chemotaxis, anastomosis, and tip death.²⁵ By adding an angiogenic gradient to their basic model, the authors showed a proof of concept that the CA could be applied to blood vessel growth; however, model revision and validation were not completed. Peirce *et al.* developed one of the first biological agent-based models to predict microvascular network patterning from a rule set based on epigenetic stimuli, molecular signals (PDGF-BB, VEGF, TGF- β), and cellular behaviors (proliferation, migration, and differentiation).²⁶ The model predicted changes in microvascular patterning in response to hemodynamic forces and exogenous focal delivery of a growth factor (VEGF) over a 10- or 14-day period. Model predictions were validated with *in vivo* experimental results, demonstrating an increase in vascular length density in response to VEGF treatment or increased circumferential wall strain. Importantly, the model revealed changes in microvascular patterning in a multicell system (ECs, smooth muscle cells, perivascular cells, and interstitial precursor cells) and could prove to be a useful tool for the rationale design of therapeutic vascularization strategies. Most recently, Qutub and Popel reported on an agent-based model designed to predict tip cell activation, stalk cell development, and sprout formation as a function of local VEGF concentration.²⁷ Rules and parameters were based on literature values and *in vitro* experimental results, and included various growth factors (VEGF, hypoxia-inducible factor 1, alpha subunit [HIF1 α]), and Notch ligand delta-like 4), MMPs, and cellular functions

(migration, elongation, and proliferation). Another agent-based modeling study by Bentley, Gerhardt, and Bates explored the role of VEGF-A and delta-like 4 (D114)/notch signaling in tip cell formation. This group developed a hierarchical model focused on VEGF-A-stimulated tip formation and subsequent D114/notch VEGF receptor 2 (VEGFR-2) inhibition. They found that D114/notch inhibition in high VEGF-A environments increased aberrant vessel growth. Partial or total inhibition of D114/notch signaling normalized tip cell response in high VEGF-A environments.²⁸ To date, agent-based models have proven to be a useful tool for hypothesis testing and hypothesis generation by providing a platform for high-throughput and low-cost experiments.

Future iterations of CA models would benefit from adding detailed models of specific angiogenic signaling networks. In a true bottom-up approach, Mac Gabhann and Popel have created molecular-level models to investigate the role of VEGF receptors in angiogenesis. Because most of the clinical trials aimed at increasing functional vascularization in ischemic tissues have failed, computational and mathematical models that incorporate the molecular-level details of VEGF signaling that could then be utilized to predict effective therapies would be a major advancement. For example, Mac Gabhann *et al.* developed a three-dimensional model to approximate the concentrations of VEGF at the single-cell level in skeletal muscle during exercise.^{29,30} This type of information is currently unobtainable experimentally, but is critical to understanding cellular responses to local growth factor gradients. The model accounts for signaling network details of VEGF, as well as oxygen transport and blood flow. This type of model could be an extremely valuable tool for tissue engineers who seek to evaluate local, sustained VEGF administration in ischemic tissues. With the incorporation of other molecular-level details of growth factor signaling networks, the model could even prove more valuable.

In addition to molecular signals, mechanical stimuli also govern the structural remodeling response of the microcirculation. The role of hemodynamics in the microcirculation has been studied best by Pries and Secomb.^{31–34} The authors have investigated the structural adaptation of microvessels in response to mechanical forces, including blood flow (shear stress) and blood pressure (circumferential wall stress). Several mathematical models of angioadaptation (postnatal structural remodeling of blood vessels) have been developed to predict changes in vessel architecture (vessel number, diameter, wall thickness, and length) as a function of blood flow and pressure.³⁵ Although the mathematical equations governing blood flow are well documented and are not the focus of this review, their impact on angiogenesis and remodeling have inspired other tissue-engineering-focused models. Because of the mass transport limitations associated with tissues $>1\text{ mm}^3$, engineers have been trying to prevascularize tissues and engineered scaffolds to increase the rate of success of tissue-engineered biological implants. Janakiraman *et al.* developed a modeling approach for the rational design of blood vessel networks with mass transport characteristics that meet the metabolic demand of tissues.³⁶ A two-dimensional microscale model with a bifurcating network design was created and used to evaluate the effects of two different network geometries (rectangular vs. square ducts) on their mass and fluid transport characteristics. The model revealed that the rectangular ducts exhibited superior

mass transport efficiency and were easier to fabricate than the square ducts. Additionally, mass transport efficiency decreases with an increase in network porosity, revealing a design criterion to minimize network bifurcations. Jabbarzadeh and Abrams developed a model to study growth factor (VEGF) diffusion in tissue-engineered constructs.³⁷ The authors varied the source of VEGF diffusion (line, line + point, and line + boundary release). Results revealed that a line source with release throughout the boundary of the construct led to a more uniform microvascular network distribution, with vascular coverage proportional to the amount of VEGF released. Model integration of Janakiraman and Jabbarzadeh would be useful to rationally design pre-vascularized tissue-engineered constructs with efficient mass transport characteristics and sustained growth factor release.

Many computational and mathematical angiogenesis models have been designed in the context of tumor vascularization because the field of therapeutic microvascular formation is still in its infancy. However, because the basic principles upon which tumor models have been built are similar to the processes governing therapeutic neovascularization, tumor models may prove useful for testing specific hypotheses, such as the identification of drug candidates. Arakelyan *et al.* developed a model to elucidate the role of specific growth factors on tumor angiogenesis (i.e., Ang-1, Ang-2, VEGF, and PDGF).³⁸ Importantly, the model predicted that only dual administration with anti-VEGF and anti-Ang-1 drugs resulted in significant decreases in tumor size, an outcome that was not observed with single administration of either factor alone. Perhaps most interestingly, the anti-VEGF drug was most effective when the percentage of immature vessels (vessels lacking pericytes coverage) was high (95%, relative to mature pericyte-containing vessels). This result may shed new light on therapeutic neovascularization approaches; perhaps a certain percentage of mural cells are needed to drive vascular growth and maturation.

Top-Down Modeling Approaches

Top-down systems biology approaches are data driven. In the advent of genomics data, these top-down approaches have emerged as new ways to study biological constituents and their interactions. The goal of top-down systems biology is to discover new molecular mechanisms through an iterative process between experimental data and hypothesis generation resulting from network level data integration. These new hypotheses can then be evaluated by experimental techniques and so forth. In this manner, previously unidentified interactions, mechanisms, and drug candidates can be identified. These -omics technologies have revolutionized biomedical research, providing new insights into mechanisms of disease and generating novel diagnostic and prognostic tools.³⁹ Example applications of these techniques and analyses are shown in Table 1.

Although top-down, high-throughput approaches reveal novel facets of a particular system, they are not without limitations. This is the case for the VEGF signaling pathway, which has been the target of numerous system-wide studies. As such, Table 1 highlights high-throughput approaches in VEGF signaling, their strengths, limitations, and possible complementary approaches. In the end, the careful selection of additional assays that support conclusions drawn from

TABLE 1. SYSTEMS BIOLOGY APPLICATIONS AND LIMITATIONS

Approach	Applications and strengths	Limitations	Complementary approaches	Examples
Proteomics	Infer drug mode of action within the cell.	Gene expression does not correlate with activated protein. Data are specific to a particular experimental environment.	Use additional assays such as Western blots and Zymography to quantify total protein concentration and activation, respectively. Pair with proteomic assays to understand downstream effects.	VEGF-independent pathways were identified as responsible for vasculopathies in HIV-infected patients. ⁴⁰ A transcriptomics approach revealed that the Food and Drug Administration–approved sorafenib operates through MAPK pathways in a VEGFR1/2-inhibited, hypoxic environment and could be a potential therapeutic for pulmonary hypertension. ⁴¹
Transcriptomics	Understand transcript regulation in a disease state or in response to a novel compound.	Gene transcript regulation does not correlate with protein translation.		Sequencing of VEGFR1/2 found two specific mutations to be correlated with risk for stroke. ⁴²
Genomics	Correlates genetic mutations with changes in cellular behavior. Predicts novel drug therapies or patient likelihood for disease.	Not always clear which specific mutation or combination of mutations leads to protein changes. Gene-specific analysis may miss the role of concerted mutations.	Support conclusions with knockout experiments to better explain the role of mutations.	

VEGF, vascular endothelial growth factor; MAPK, mitogen-activated protein (MAP) kinase; VEGFR1/2, vascular endothelial growth factor receptor 1, or 2.

systems analysis methods will be warranted. Table 1 is not an exhaustive list of VEGF systems biology approaches. (For a more thorough review of VEGF systems biology, we refer you to a review by Mac Gabhann and Popel.⁴⁰)

Systems biologists use computational analysis tools to derive hypothesis from large data sets. Computational tools range in complexity and sophistication, and generate different hypotheses based on the nature of the analysis (Fig. 2). In the context of microarray data, a simple statistical analysis reveals which genes are significantly up-regulated or down-regulated compared to a predetermined threshold under a particular experimental condition. To better understand multiple gene interactions or patterns of activity, a more advanced clustering analysis may be required. These techniques are broadly applicable to any large data set and may be augmented depending on the nature of the system of interest. Quackenbush provides a more thorough introduction to the basic computational analyses available.⁴¹ However, the field is constantly changing as new computational algorithms are developed to deal with complex data sets.

In recent years, genomic and proteomic approaches have elucidated many cellular and molecular mechanisms of angiogenesis and subsequently identified potential therapeutic targets for the manipulation of this process.^{42,43} Functional genomics approaches have been used to compare the gene expression profiles of ECs isolated from normal, tumor, or regenerating blood vessels.^{18,44–46} These studies have shown that ECs activate different signaling cascades depending on their location and physiological or pathological state. Such data can help guide therapies targeted to pro- or anti-angiogenic drug delivery strategies.

In the context of tumor vascularization, top-down systems biology techniques have the capacity to unravel the complexity of angiogenesis. For example, a multiscale model depicting signaling dynamics between the pro- and antiangiogenic

compounds within tumor cells qualitatively predicted the effect of endostatin gene therapy. The model determined a critical endostatin expression level required for therapeutic inhibition of angiogenesis.⁴⁷ Genomic analysis of annexin A1 knock out mice revealed that the protein is implicated in inflammatory and pro-angiogenic processes, making it an ideal candidate for cancer therapy.⁴⁸ Because tumor angiogenesis applications of systems biology are not the emphasis of this review, we direct you to Kreeger and Lauffenburger, who provide a more thorough review of cancer systems biology techniques.⁴⁹

In the previous example of genomic annexin A1 analysis, the group also reported that annexin A1 overexpression may be a therapeutic means to increase wound healing.⁴⁸ Although the application of top-down approaches to therapeutic angiogenesis is limited, there are numerous ways to apply current approaches to developing functional microvasculature. Pathways analysis, for example, can be employed on genomic data from cDNA microarrays to discover the mechanisms of action of unknown drug candidates, to predict efficacy, or to identify new drug leads.⁵⁰

To provide an example, our group has been investigating the mechanism of action of the pro-angiogenic molecule phthalimide neovascular factor (PNF1), a synthetic small molecule that has demonstrated efficacy in enhancing EC proliferation and capillary network formation *in vitro*.⁵¹ Additionally, local sustained release of PNF1 has led to increased neovascularization in the mouse dorsal skinfold window chamber model of microvascular growth and remodeling.⁵² These results highlight PNF1 as a potential candidate for pro-angiogenic therapies. However, because its mechanism of action is unknown, transcriptional profiling was used to elucidate the mechanism underlying the biological activity of PNF1.^{53,54} cDNA microarray data containing ~47,000 transcripts were generated for cultures of

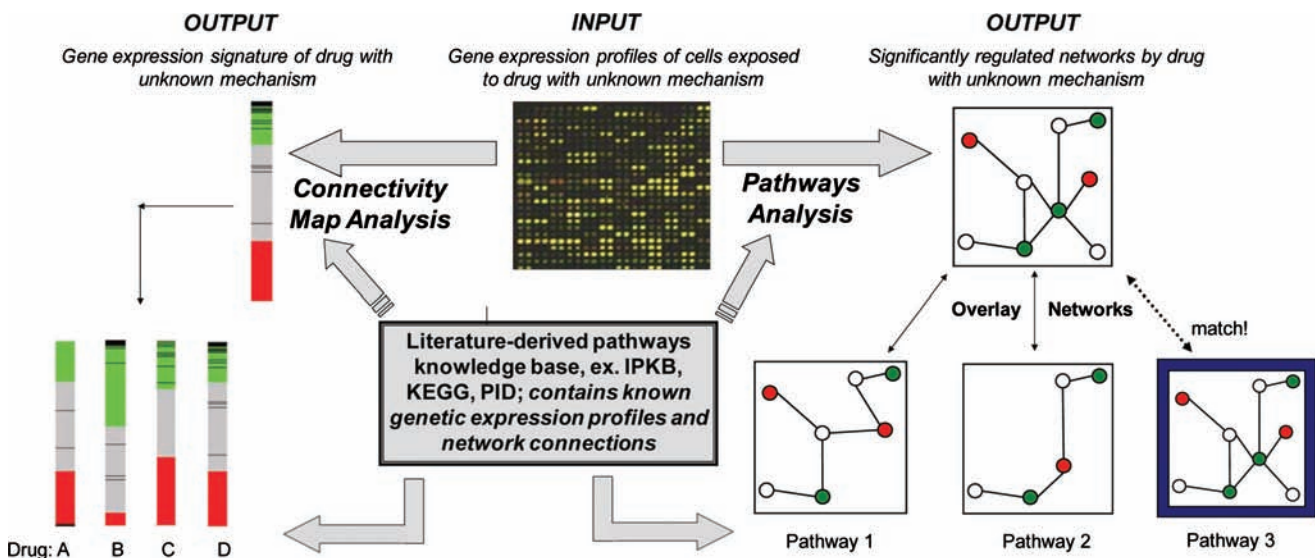


FIG. 3. Network analysis tools. Microarray data from a drug of unknown mechanism can be analyzed using a compendium analysis approach (Pathways Analysis, shown on right) or a genomic-mapping approach (Connectivity Map Analysis, shown on left). Both top-down approaches rely on literature-derived knowledge bases that are manually curated and contain known genetic signatures and signaling networks. The unknown data are mapped against data from drugs with known mechanisms to identify areas of overlap, thereby indicating similarity in drug mechanism. Color images available online at www.liebertonline.com/ten.

human microvascular ECs stimulated with PNF1 for various time points and compared to cultures treated with a vehicle control. Examination of the data using network analysis tools revealed a concerted regulation of many gene products that have known effects on vascular remodeling, providing a potential window for therapeutic manipulation with PNF1 delivery.

A novel compendium analysis was performed in the aforementioned interrogation of PNF1's mechanism. Traditionally, compendium analyses have been used to compare the genetic expression profiles of unknown drugs to signatures of known compounds, as drugs with similar genetic footprints are likely to share mechanistic targets.⁵⁵ Compendium analysis involves rating the similarity between a measured data set and the compendium, or compilation, of previously generated profiles. This technique is visually represented in Figure 3. Realistically, however, transcriptional profiles of similar drugs tested on the same cell type at similar concentrations often do not exist, making direct comparisons difficult and open to interpretation. Likewise, docking studies require an exhaustive screening process of all potential binding partners, which is both time consuming and prohibitively expensive. To this end, our novel compendium approach overlaid the transcriptional profile of a small molecule on a literature-derived pathway knowledge database (Ingenuity Pathways Knowledge Base [IPKB], www.ingenuity.com/products/pathways_knowledge.html). The IPKB is essentially a library of signaling interactions that may be used to elucidate associations between previously unrelated signaling network components. After identifying new network connections, Ingenuity Pathways Analysis iteratively compares and ranks these networks and markers relevant to the connections (Fig. 3). This process is similar to determining that two people are related in a family tree based on the acquisition of new knowledge that they share the same third cousin. Using Ingenuity Pathways Analysis to perform a novel compendium analysis, our group identified signaling networks that were most directly correlated with the gene expression data (for details, see Ref.⁵⁴). This methodology revealed that PNF1 predominately affects transcription of genes in the tumor necrosis factor- α (TNF- α) pathway at earlier time points (1- and 2-h poststimulation), whereas TGF- β -related signaling molecules are more influential at later time points (especially after 24 h). Both TNF- α and TGF- β have known activities in microvascular remodeling, and their identification as major players in PNF1-induced angiogenesis may now lead to drug optimization protocols and proper therapeutic utilization.

Similar to using the IPKB to conduct compendium analyses, the Connectivity Map seeks to correlate expression data with a larger database (Fig. 3). This database contains catalogs of expression data from human cells exposed to various drug stimulations or disease states.⁵⁶ The Connectivity Map has evolved as a resource whereby a researcher studying a drug candidate, gene, or disease state, could compare its signature to a reference database to discover functional connections to known pathways.⁵⁶ This Web-based tool is publicly accessible at www.broad.mit.edu/cmap, allowing researchers to perform their own connectivity map analyses with user-defined signatures in real time. One large advantage over other compendia-based approaches is that the Connectivity Map enables the integration

of internal reference data (genome-wide expression profiles) with external query data provided by users in the form of a genetic signature. The initial focus of the project is to include the genetic signatures of all the 1500 small-molecule drugs licensed by the Food and Drug Administration for human use; currently, the database contains gene expression profiles from 453 treatments of four cell lines with 164 bioactive molecules.⁵⁷ Ultimately, the goal of the Connectivity Map project is to connect human diseases with the genes that underlie them and the drugs that can treat them.

With emerging tools like the Connectivity Map, identifying genes responsible for the progression of cancer, for example, may become easier. The hallmark of cancer progression is the angiogenic switch, a shift of the angiogenic balance to a pro-angiogenic state.⁵⁸ Human tumors arise and can exist in the microscopic state avascularized for months or years. The switch to a pro-angiogenic phenotype results in rapid neovascularization, tumor growth, and subsequent metastasis. Although angiogenesis has been widely studied and several key components of the angiogenic switch have been identified, the molecular and genetic mechanisms mediating the switch are largely unknown.⁵⁹ Abdollahi and colleagues analyzed the human transcriptome by cDNA arrays using clustering techniques to observe how gene expression was altered after treatment with endostatin (antiangiogenic), VEGF alone, and VEGF plus basic FGF (bFGF) (pro-angiogenic). Although several well-known angiogenic genes were represented in the network (*HIF1 α* and *VEGFR-2*), genes only recently reported as angiogenic were also highlighted by the clustering methodology. Further, genes not known to be connected to angiogenesis, such as peroxisome proliferator-activated receptor delta (*PPAR δ*), interleukin-6 (*IL6*), *MMP1*, and others, were represented in high numbers, suggesting a broader participation in the angiogenic switch than previously hypothesized. To validate this prediction, the authors targeted the removal of the *PPAR δ* hub node by using *PPAR δ ^{-/-}* mice, and the results demonstrated a reduction in tumor growth and tumor microvascular density. This confirms a critical involvement of the signaling pathway in angiogenesis, and highlights the powerful utility of this top-down systems biology approach.⁵⁹ Interestingly, dual administration of VEGF and bFGF did not result in a significant upregulation of pro-angiogenic transcripts compared to either factor alone. One potential explanation is that VEGF and bFGF share a common pathway. The angiogenic phenotype observed in VEGF or bFGF stimulated tissues could be a result of activating similar downstream signaling cascades. There exist other known angiogenic stimuli, such as sphingosine 1-phosphate for example,^{60,61} that presumably have less crosstalk with VEGF signaling due to their different receptors (sphingosine 1-phosphate: G protein-coupled receptors, VEGF: receptor tyrosine kinase). It would be interesting to use systems biology tools to assess stimulation of two pathways, with minimal crosstalk, on angiogenesis. This method may identify novel targets of angiogenesis.

Future Directions

In silico strategies aimed at predicting clinical efficacy could have a major impact on the current pharmaceutical approach to drug discovery. The development of new drugs is a risky and costly process; approximately half of all compounds entering phase II clinical trials will fail, resulting in

over \$8 million per drug in amortized costs.¹¹ Thus, the application of systems biology approaches to drug discovery could streamline the entire process and save time, money, and resources. In this review, we have discussed both bottom-up and top-down systems biology approaches that have already been taken to identify pro-angiogenic drug candidates and engineer microvascular networks. Figure 2 visually summarizes how these different approaches probe the microvasculature at multiple scales. In isolation, each computational technique deepens the understanding of a particular facet of the microvascular system. However, bottom-up modeling and top-down modeling have yet to be combined in one comprehensive model.

To be ultimately successful, however, all of these systems methodologies depend on the quality and completeness of the data at hand. Several bioinformatics databases have evolved to integrate the various data forms and aid hypothesis generation.^{62–64} For example, the Pathway Interaction Database (<http://pid.nci.nih.gov>) is a highly curated, freely available collection of human signaling and regulatory pathways that was specifically designed to deal with incomplete knowledge, complex details, or generalizations.⁶³ Researchers can search for a single molecule to find its known mechanistic pathway or for a group of molecules to examine signaling interactions among them. The database is updated with new pathway information each month, including the National Cancer Institute (NCI)–Nature Curated collection, Reactome data, and the BioCarta collection (for a list of pathways, see: http://pid.nci.nih.gov/browse_pathways.shtml). Such breadth in imports will hopefully allow researchers to investigate novel networks and reveal parallel, yet alternative hypotheses, such as providing a mechanism by which a single pro-angiogenic compound is not effective and suggesting potential multiagent therapies. The future of systems biology will likely require curated databases and online workstations like the Physiome Project, Connectivity Map, and Pathway Interaction Database, among others. Although not without limitations, top-down and bottom-up systems biology approaches to drug discovery and microvascular network formation represent the future in bioinformatics strategies and have already led to important discoveries regarding the mechanisms of novel compounds and their interactions at the network scale.

Acknowledgments

Funding support was provided by NIAMS grant K01AR052352-01A1 to Dr. E.A. Botchwey and NSF CAREER award #0643548 to Dr. J.A. Papin.

Disclosure Statement

No competing financial interests exist.

References

- Niklason, L.E., Gao, J., Abbott, W.M., Hirschi, K.K., Houser, S., Marini, R., and Langer, R. Functional arteries grown *in vitro*. *Science* **284**, 489, 1999.
- Cima, L.G., Vacanti, J.P., Vacanti, C., Ingber, D., Mooney, D., and Langer, R. Tissue engineering by cell transplantation using degradable polymer substrates. *J Biomech Eng* **113**, 143, 1991.
- Perets, A., Baruch, Y., Weisbuch, F., Shoshany, G., Neufeld, G., and Cohen, S. Enhancing the vascularization of three-dimensional porous alginate scaffolds by incorporating controlled release basic fibroblast growth factor microspheres. *J Biomed Mater Res A* **65**, 489, 2003.
- Kauly, T., Kaufman-Francis, K., Lesman, A., and Levenberg, S. Vascularization—the conduit to viable engineered tissues. *Tissue Eng Part B Rev* **15**, 159, 2009.
- Laschke, M.W., Rucker, M., Jensen, G., Carvalho, C., Mulhaupt, R., Gellrich, N.C., and Menger, M.D. Improvement of vascularization of PLGA scaffolds by inoculation of *in situ*-preformed functional blood vessels with the host microvasculature. *Ann Surg* **248**, 939, 2008.
- Richardson, T.P., Peters, M.C., Ennett, A.B., and Mooney, D.J. Polymeric system for dual growth factor delivery. *Nat Biotechnol* **19**, 1029, 2001.
- Drury, J.L., and Mooney, D.J. Hydrogels for tissue engineering: scaffold design variables and applications. *Biomaterials* **24**, 4337, 2003.
- Ferrara, N., Gerber, H.P., and LeCouter, J. The biology of VEGF and its receptors. *Nat Med* **9**, 669, 2003.
- Shyu, K.G., Chang, H., and Isner, J.M. Synergistic effect of angiopoietin-1 and vascular endothelial growth factor on neoangiogenesis in hypercholesterolemic rabbit model with acute hindlimb ischemia. *Life Sci* **73**, 563, 2003.
- de Paula, E.V., Flores-Nascimento, M.C., Arruda, V.R., Garcia, R.A., Ramos, C.D., Guillaumon, A.T., and Annichino-Bizzacchi, J.M. Dual gene transfer of fibroblast growth factor-2 and platelet derived growth factor-BB using plasmid deoxyribonucleic acid promotes effective angiogenesis and arteriogenesis in a rodent model of hindlimb ischemia. *Transl Res* **153**, 232, 2009.
- Michelson, S., Sehgal, A., and Friedrich, C. *In silico* prediction of clinical efficacy. *Curr Opin Biotechnol* **17**, 666, 2006.
- Hopkins, A.L. Network pharmacology: the next paradigm in drug discovery. *Nat Chem Biol* **4**, 682, 2008.
- Peirce, S.M. Computational and mathematical modeling of angiogenesis. *Microcirculation* **15**, 739, 2008.
- Qutub, A., Gabhann, F., Karagiannis, E., Vempati, P., and Popel, A. Multiscale models of angiogenesis. *IEEE Eng Med Biol Mag* **28**, 14, 2009.
- Popel, A.S., Greene, A.S., Ellis, C.G., Ley, K.F., Skalak, T.C., and Tonellato, P.J. The Microcirculation Physiome Project. *Ann Biomed Eng* **26**, 911, 1998.
- Bassingthwaight, J.B. Microcirculation and the physiome projects. *Microcirculation* **15**, 835, 2008.
- Westerhoff, H.V., and Palsson, B.O. The evolution of molecular biology into systems biology. *Nat Biotechnol* **22**, 1249, 2004.
- Seaman, S., Stevens, J., Yang, M.Y., Logsdon, D., Graff-Cherry, C., and St. Croix, B. Genes that distinguish physiological and pathological angiogenesis. *Cancer Cell* **11**, 539, 2007.
- Liotta, L.A., Saidel, G.M., and Kleinerman, J. Diffusion model of tumor vascularization and growth. *Bull Math Biol* **39**, 117, 1977.
- Zawicki, D.F., Jain, R.K., Schmid-Schoenbein, G.W., and Chien, S. Dynamics of neovascularization in normal tissue. *Microvasc Res* **21**, 27, 1981.
- Stokes, C.L., and Lauffenburger, D.A. Analysis of the roles of microvessel endothelial cell random motility and chemotaxis in angiogenesis. *J Theor Biol* **152**, 377, 1991.
- Stokes, C.L., Lauffenburger, D.A., and Williams, S.K. Migration of individual microvessel endothelial cells: stochastic

- model and parameter measurement. *J Cell Sci* **99** (Pt 2), 419, 1991.
23. Anderson, A.R., and Chaplain, M.A. Continuous and discrete mathematical models of tumor-induced angiogenesis. *Bull Math Biol* **60**, 857, 1998.
 24. Sun, S., Wheeler, M.F., Obeyesekere, M., and Patrick, C.W., Jr. A deterministic model of growth factor-induced angiogenesis. *Bull Math Biol* **67**, 313, 2005.
 25. Markus, M., Bohm, D., and Schmick, M. Simulation of vessel morphogenesis using cellular automata. *Math Biosci* **156**, 191, 1999.
 26. Peirce, S.M., Van Gieson, E.J., and Skalak, T.C. Multicellular simulation predicts microvascular patterning and *in silico* tissue assembly. *FASEB J* **18**, 731, 2004.
 27. Qutub, A.A., and Popel, A.S. Elongation, proliferation & migration differentiate endothelial cell phenotypes and determine capillary sprouting. *BMC Syst Biol* **3**, 13, 2009.
 28. Bentley, K., Gerhardt, H., and Bates, P.A. Agent-based simulation of notch-mediated tip cell selection in angiogenic sprout initialisation. *J Theor Biol* **250**, 25, 2008.
 29. Mac Gabhann, F., Ji, J.W., and Popel, A.S. VEGF gradients, receptor activation, and sprout guidance in resting and exercising skeletal muscle. *J Appl Physiol* **102**, 722, 2007.
 30. Mac Gabhann, F., Ji, J.W., and Popel, A.S. Multi-scale computational models of pro-angiogenic treatments in peripheral arterial disease. *Ann Biomed Eng* **35**, 982, 2007.
 31. Pries, A.R., Secomb, T.W., Gaehtgens, P., and Gross, J.F. Blood flow in microvascular networks. Experiments and simulation. *Circ Res* **67**, 826, 1990.
 32. Pries, A.R., Secomb, T.W., and Gaehtgens, P. Design principles of vascular beds. *Circ Res* **77**, 1017, 1995.
 33. Pries, A.R., Secomb, T.W., and Gaehtgens, P. Structural adaptation and stability of microvascular networks: theory and simulations. *Am J Physiol* **275**, H349, 1998.
 34. Pries, A.R., and Secomb, T.W. Modeling structural adaptation of microcirculation. *Microcirculation* **15**, 753, 2008.
 35. Zakrzewicz, A., Secomb, T.W., and Pries, A.R. Angioadaptation: keeping the vascular system in shape. *News Physiol Sci* **17**, 197, 2002.
 36. Janakiraman, V., Mathur, K., and Baskaran, H. Optimal planar flow network designs for tissue engineered constructs with built-in vasculature. *Ann Biomed Eng* **35**, 337, 2007.
 37. Jabbarzadeh, E., and Abrams, C.F. Strategies to enhance capillary formation inside biomaterials: a computational study. *Tissue Eng* **13**, 2073, 2007.
 38. Arakelyan, L., Vainstein, V., and Agur, Z. A computer algorithm describing the process of vessel formation and maturation, and its use for predicting the effects of anti-angiogenic and anti-maturation therapy on vascular tumor growth. *Angiogenesis* **5**, 203, 2002.
 39. Ruegg, C., Tissot, J.D., Farmer, P., and Mariotti, A. Omics meets hypothesis-driven research. Partnership for innovative discoveries in vascular biology and angiogenesis. *Thromb Haemost* **100**, 738, 2008.
 40. Mac Gabhann, F., and Popel, A.S. Systems biology of vascular endothelial growth factors. *Microcirculation* **15**, 715, 2008.
 41. Quackenbush, J. Computational analysis of microarray data. *Nat Rev Genet* **2**, 418, 2001.
 42. Mittal, V., and Nolan, D.J. Genomics and proteomics approaches in understanding tumor angiogenesis. *Expert Rev Mol Diagn* **7**, 133, 2007.
 43. Korherr, C., Gille, H., Schafer, R., Koenig-Hoffmann, K., Dixelius, J., Egland, K.A., Pastan, I., and Brinkmann, U. Identification of proangiogenic genes and pathways by high-throughput functional genomics: TBK1 and the IRF3 pathway. *Proc Natl Acad Sci USA* **103**, 4240, 2006.
 44. St. Croix, B., Rago, C., Velculescu, V., Traverso, G., Romans, K.E., Montgomery, E., Lal, A., Riggins, G.J., Lengauer, C., Vogelstein, B., and Kinzler, K.W. Genes expressed in human tumor endothelium. *Science* **289**, 1197, 2000.
 45. Ghilardi, C., Chiorino, G., Dossi, R., Nagy, Z., Giavazzi, R., and Bani, M. Identification of novel vascular markers through gene expression profiling of tumor-derived endothelium. *BMC Genomics* **9**, 201, 2008.
 46. Bhati, R., Patterson, C., Livasy, C.A., Fan, C., Ketelsen, D., Hu, Z., Reynolds, E., Tanner, C., Moore, D.T., Gabrielli, F., Perou, C.M., and Klauber-DeMore, N. Molecular characterization of human breast tumor vascular cells. *Am J Pathol* **172**, 1381, 2008.
 47. Billy, F., Ribba, B., Saut, O., Morre-Trouilhet, H., Colin, T., Bresch, D., Boissel, J.P., Grenier, E., and Flandrois, J.P. A pharmacologically based multiscale mathematical model of angiogenesis and its use in investigating the efficacy of a new cancer treatment strategy. *J Theor Biol* **260**, 545, 2009.
 48. Yi, M., and Schnitzer, J.E. Impaired tumor growth, metastasis, angiogenesis and wound healing in annexin A1-null mice. *Proc Natl Acad Sci USA* **106**, 17886, 2009.
 49. Kreeger, P.K., and Lauffenburger, D.A. Cancer systems biology: a network modeling perspective. *Carcinogenesis* **31**, 2, 2010.
 50. Yuryev, A. *In silico* pathway analysis: the final frontier towards completely rational drug design. *Expert Opin Drug Discov* **3**, 867, 2008.
 51. Wieghaus, K.A., Capitosti, S.M., Anderson, C.R., Price, R.J., Blackman, B.R., Brown, M.L., and Botchwey, E.A. Small molecule inducers of angiogenesis for tissue engineering. *Tissue Eng* **12**, 1903, 2006.
 52. Wieghaus, K.A., Nickerson, M.M., Petrie Aronin, C.E., Sefcik, L.S., Price, R.J., Paige, M.A., Brown, M.L., and Botchwey, E.A. Expansion of microvascular networks *in vivo* by phthalimide neovascular factor 1 (PNF1). *Biomaterials* **29**, 4698, 2008.
 53. Wieghaus, K.A., Gianchandani, E.P., Brown, M.L., Papin, J.A., and Botchwey, E.A. Mechanistic exploration of phthalimide neovascular factor 1 using network analysis tools. *Tissue Eng* **13**, 2561, 2007.
 54. Wieghaus, K.A., Gianchandani, E.P., Paige, M.A., Brown, M.L., Botchwey, E.A., and Papin, J.A. Novel pathway compendium analysis elucidates mechanism of pro-angiogenic synthetic small molecule. *Bioinformatics* **24**, 2384, 2008.
 55. Butcher, R.A., and Schreiber, S.L. Using genome-wide transcriptional profiling to elucidate small-molecule mechanism. *Curr Opin Chem Biol* **9**, 25, 2005.
 56. Lamb, J., Crawford, E.D., Peck, D., Modell, J.W., Blat, I.C., Wrobel, M.J., Lerner, J., Brunet, J.P., Subramanian, A., Ross, K.N., Reich, M., Hieronymus, H., Wei, G., Armstrong, S.A., Haggarty, S.J., Clemons, P.A., Wei, R., Carr, S.A., Lander, E.S., and Golub, T.R. The connectivity map: using gene-expression signatures to connect small molecules, genes, and disease. *Science* **313**, 1929, 2006.
 57. Lamb, J. The connectivity map: a new tool for biomedical research. *Nat Rev Cancer* **7**, 54, 2007.
 58. Hanahan, D., and Folkman, J. Patterns and emerging mechanisms of the angiogenic switch during tumorigenesis. *Cell* **86**, 353, 1996.
 59. Abdollahi, A., Schwager, C., Kleeff, J., Esposito, I., Domhan, S., Peschke, P., Hauser, K., Hahnfeldt, P., Hlatky, L., Debus, J., Peters, J.M., Friess, H., Folkman, J., and Huber, P.E.

- Transcriptional network governing the angiogenic switch in human pancreatic cancer. *Proc Natl Acad Sci USA* **104**, 12890, 2007.
60. Igarashi, J., Erwin, P.A., Dantas, A.P., Chen, H., and Michel, T. VEGF induces S1P1 receptors in endothelial cells: Implications for cross-talk between sphingolipid and growth factor receptors. *Proc Natl Acad Sci USA* **100**, 10664, 2003.
61. Sefcik, L.S., Petrie Aronin, C.E., Wieghaus, K.A., and Botchwey, E.A. Sustained release of sphingosine 1-phosphate for therapeutic arteriogenesis and bone tissue engineering. *Biomaterials* **29**, 2869, 2008.
62. Loging, W., Harland, L., and Williams-Jones, B. High-throughput electronic biology: mining information for drug discovery. *Nat Rev Drug Discov* **6**, 220, 2007.
63. Schaefer, C.F., Anthony, K., Krupa, S., Buchoff, J., Day, M., Hannay, T., and Buetow, K.H. PID: the pathway interaction database. *Nucleic Acids Res* **37**, D674, 2009.
64. Ekins, S., Mestres, J., and Testa, B. *In silico* pharmacology for drug discovery: applications to targets and beyond. *Br J Pharmacol* **152**, 21, 2007.

Address correspondence to:

Edward A. Botchwey, Ph.D.

Department of Biomedical Engineering

University of Virginia

P.O. Box 800759

Charlottesville, VA 22908

E-mail: botchwey@virginia.edu

Received: September 10, 2009

Accepted: January 29, 2010

Online Publication Date: April 6, 2010